



DELANCEY UK SCHOOLS

CHESS CHALLENGE

Activity Booklet

Saturday 12/09/2020



Introduction

The UKCC weekly activity booklet will be sent out every Saturday morning and contains chess puzzles and activities for a range of ability levels.

Players are encouraged to at least try and complete the page most relevant to their ability level (see table below). However you are welcome to tackle the entire booklet! At the end of the booklet there are some more general puzzles / activities for everyone to enjoy

Solutions

Solutions will be posted alongside the following weeks activity booklet and there will also be a video solution guide.

Please email us any feedback or ideas for future puzzles!

Ability Levels

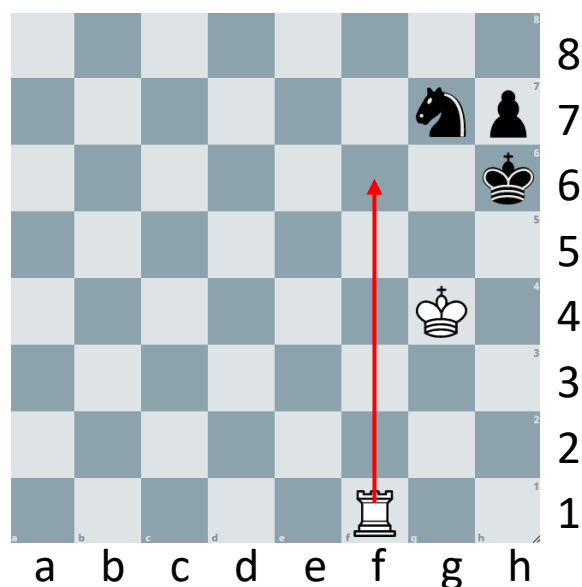
Club	Description	Approximate ECF Grade *
DECA – Club	Complete beginners and those with an incomplete grasp of the rules	Ungraded
MEGA – Club	Know the rules but little grasp of planning what to do beyond capturing and quick checkmates. Little to no tournament experience	0 – 59
GIGA – Club	Players with some tournament experience looking to “level up”	60 – 99
TERA – Club	More experienced players who have won or placed highly in local competitions	100 – 129
EXA - Club	Very experienced players with success at National Level events	130 – 159

Example

Below are examples of how you might write your solution to a puzzle presented in the booklet. Or you might prefer to just solve them in your head – completely up to you!

Q: Can you find checkmate in one for white?

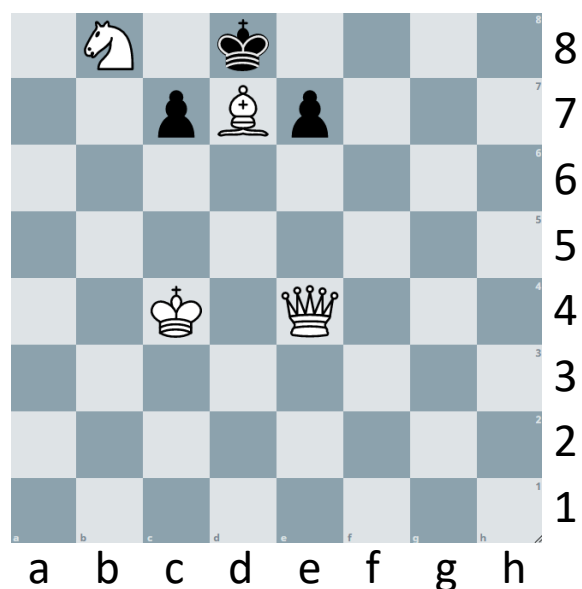
Here, because the solution is only one move, you might draw arrows on the board or you can use the lines below to answer – or both!



Rf6#
.....
.....

Q: Can you find checkmate in two for white?

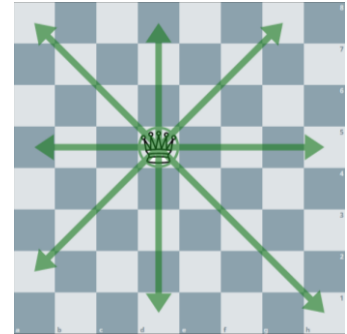
Here, the solution is a bit (OK a lot!) trickier and requires consideration of multiple variations. If you are familiar with coordinates, it is probably best that you write your answer out as shown.



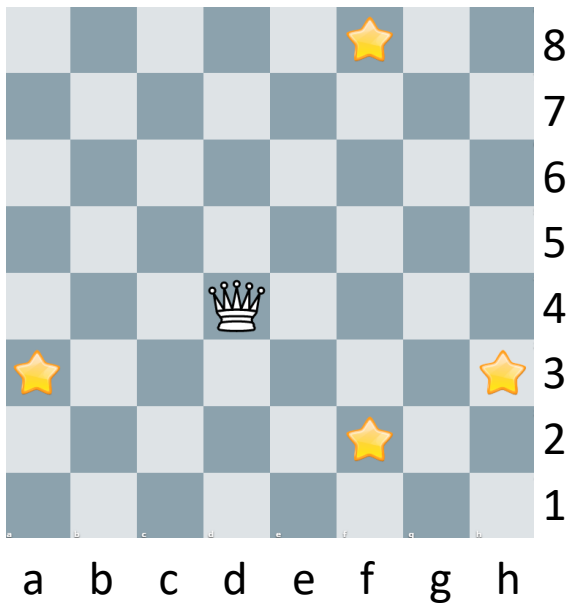
1.Qe1 e6 (1..c6 2.Qa5#) 2. Qh4#
.....
.....

Deca

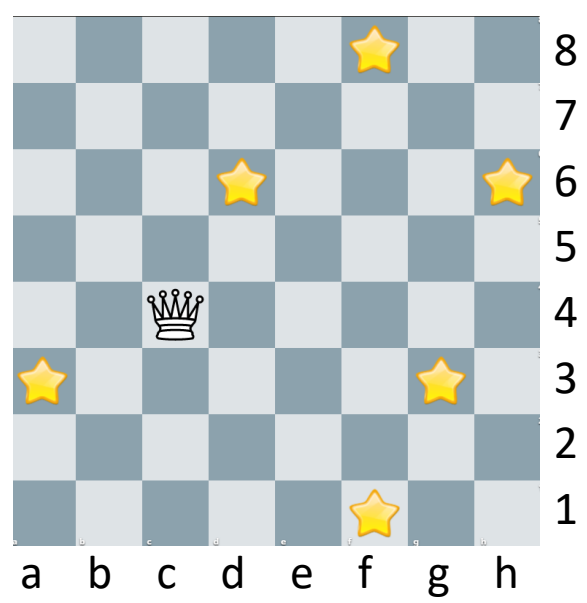
The queen can move in straight lines and diagonals as many squares as it likes as shown on the right. A queen captures a piece by moving on top of it. See if you can solve the 'hungry queen' puzzles below, try and capture all the stars in as few moves as possible. Write down how many moves it takes you.



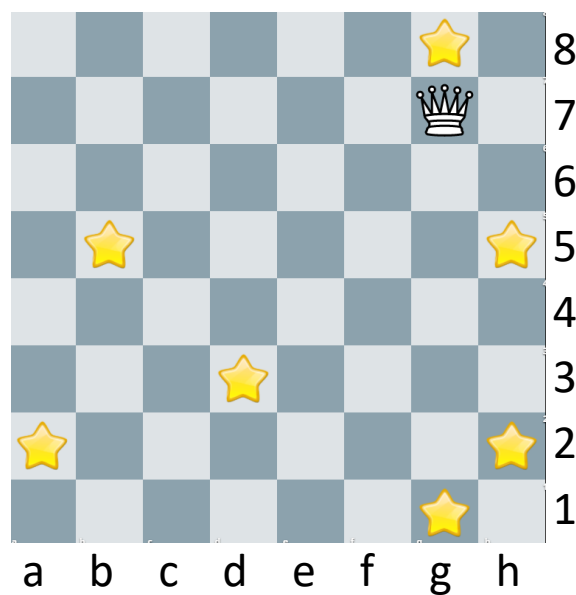
1



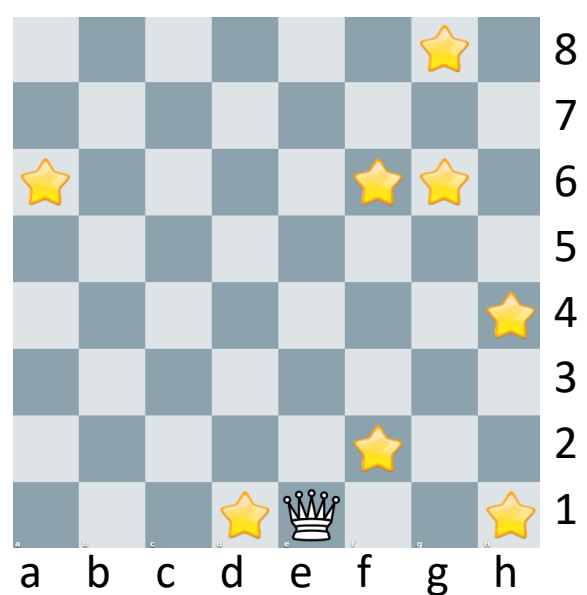
3



2



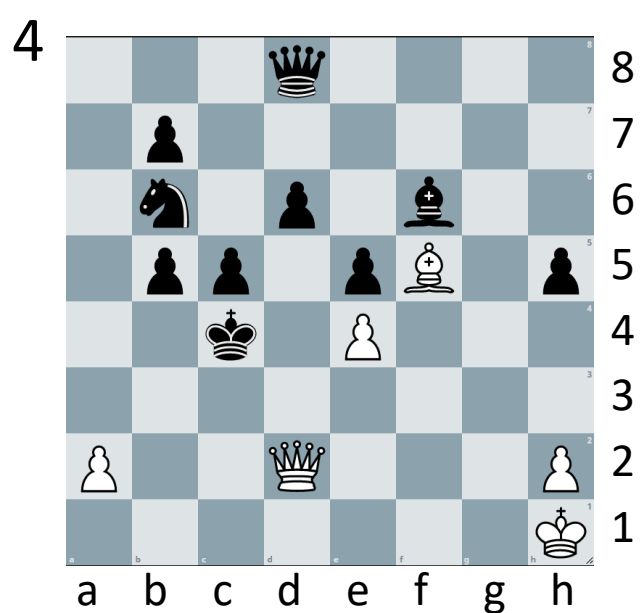
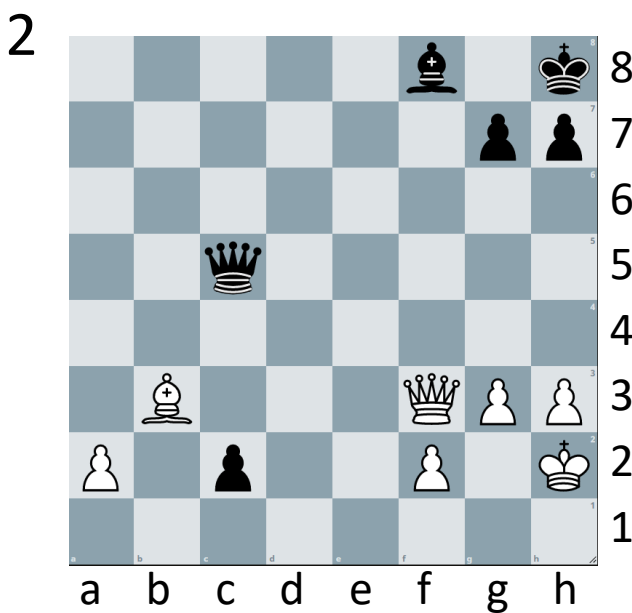
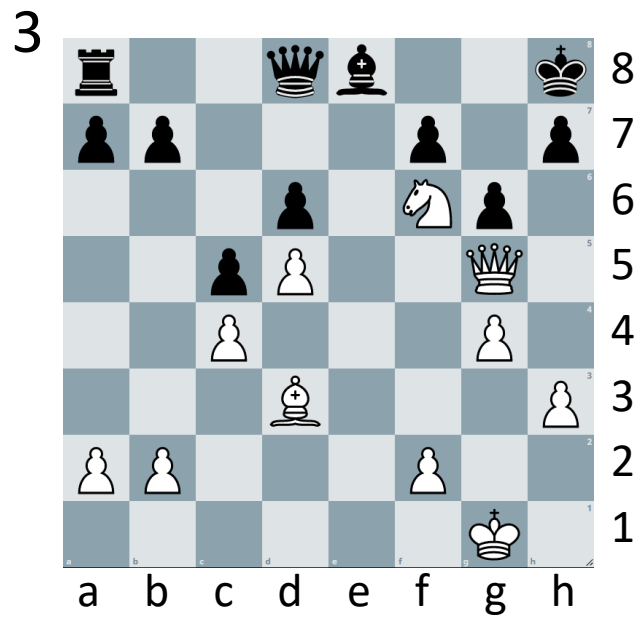
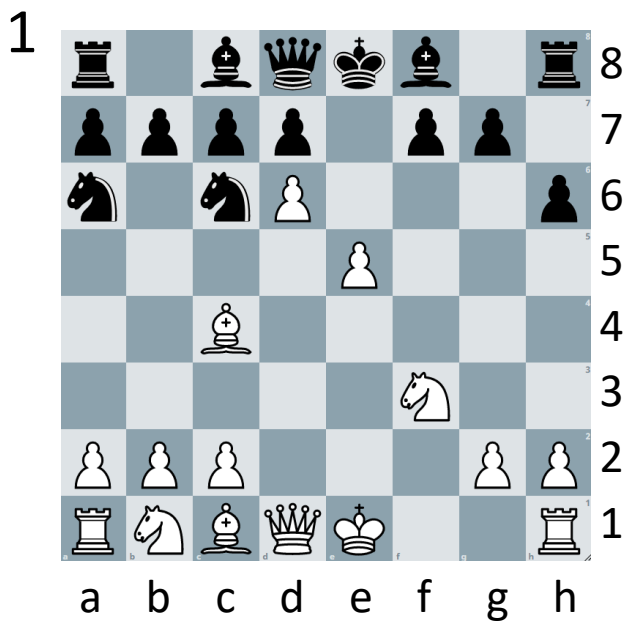
4



Mega

In the diagrams below it is white play. Your task is to find a move which threatens checkmate on the next move. Black either cannot parry the threat or it will cost them a lot of material to do so!

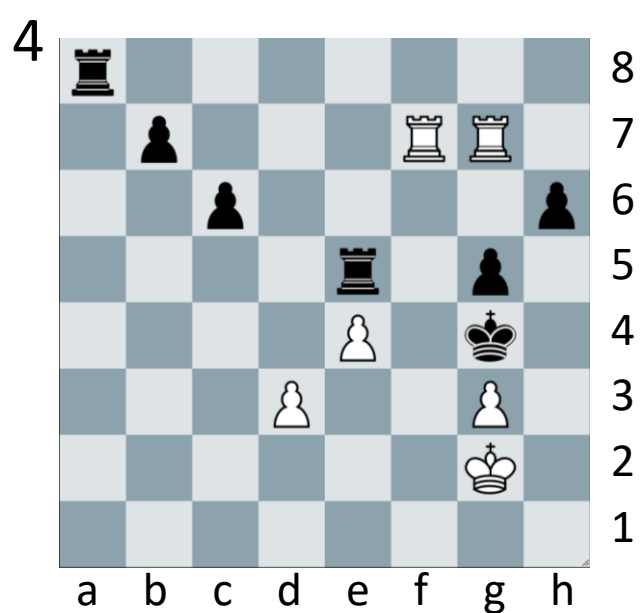
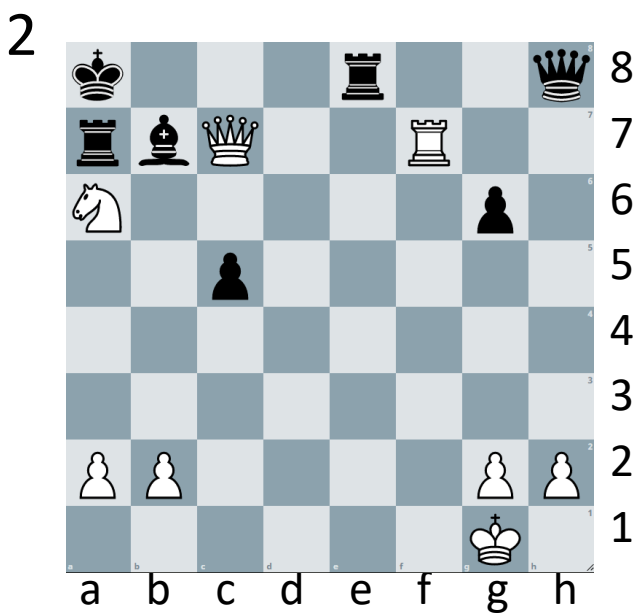
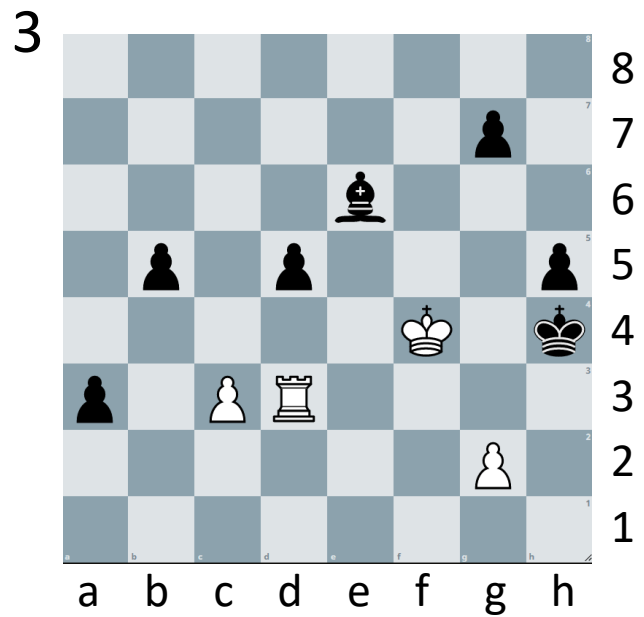
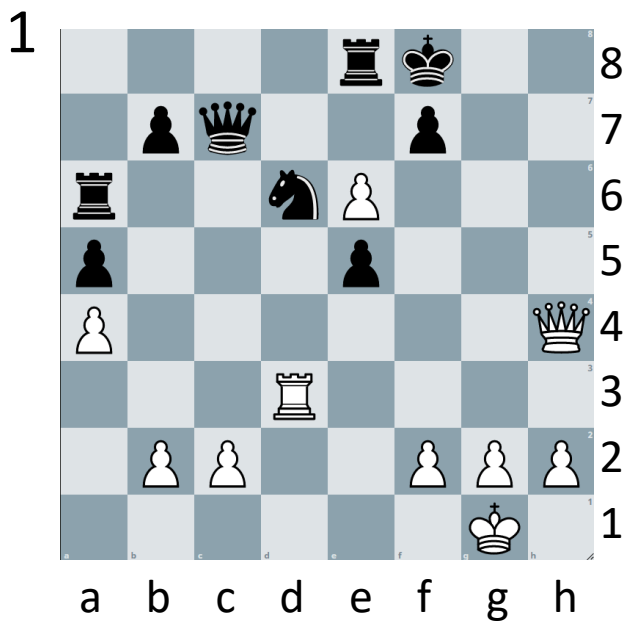
Knowing how to create checkmating threats will make you a much more dangerous opponent!



Giga

In the diagrams below it is white play. You have to lure a defender into the escape path of the black king to create a type of “smothered mate”!

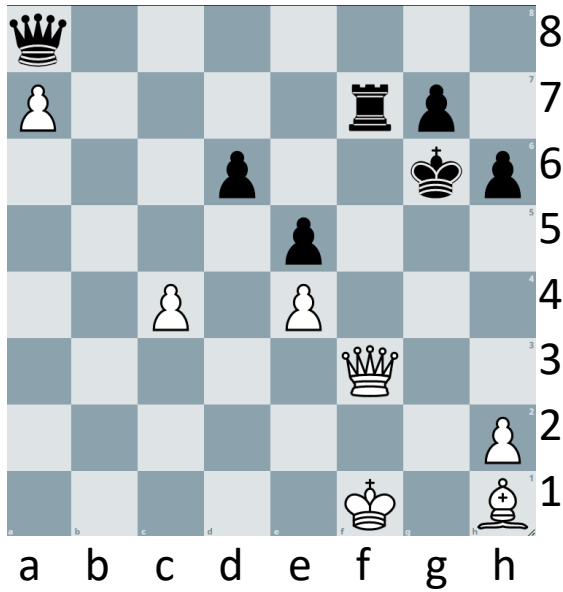
Beware – puzzle 4 is a mate in 3 (the others are mate in 2)!



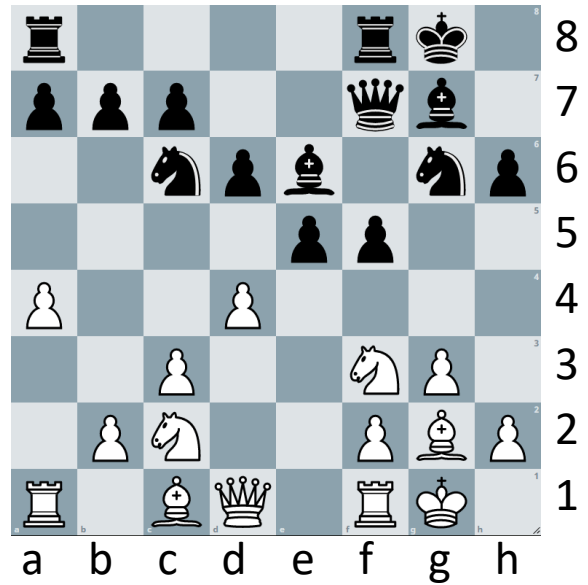
Tera

In the diagrams below it is white play. Your task is to use the power of a deadly discovered attack to win material. Remember: don't just choose the first move that looks good...calculate and be sure to consider alternatives.

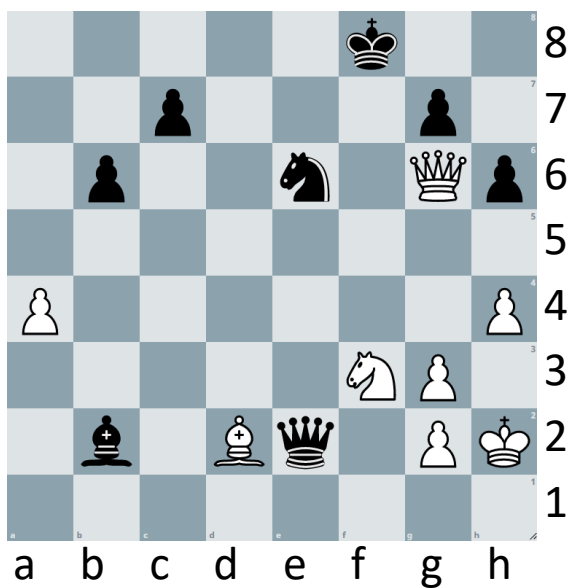
1



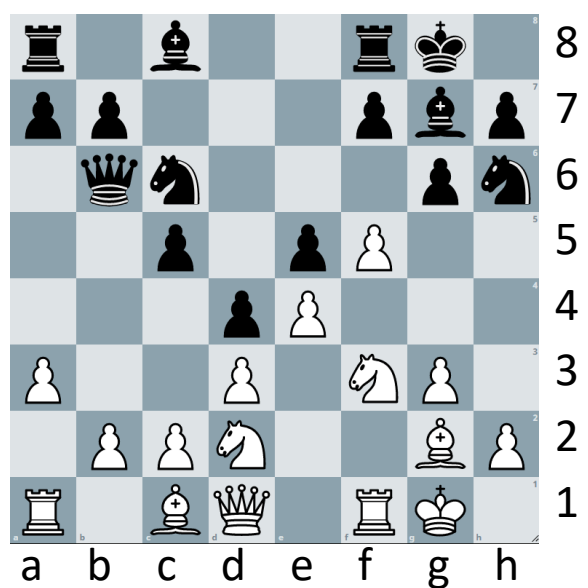
3



2



4

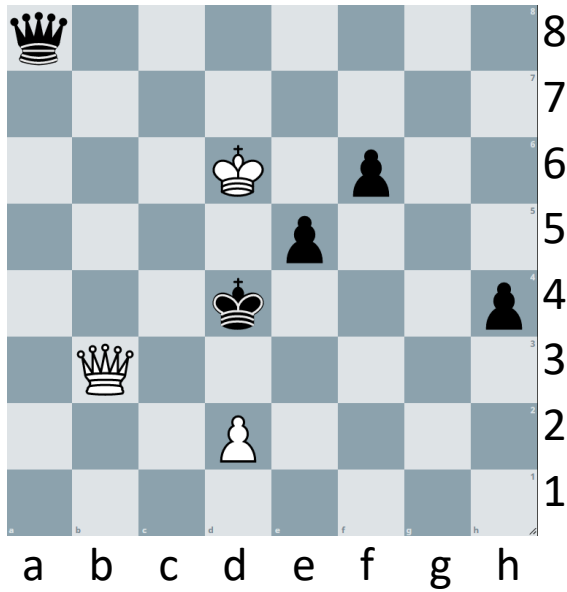


Exa

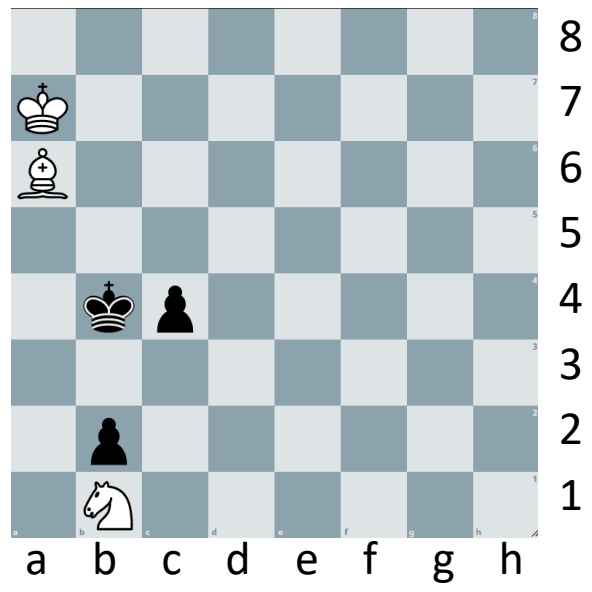
The following positions (all white to play) are examples of “endgame mating nets”. White has to create a mating net that either leads to checkmate or decisive material gain.

These are seriously tough – try and write down the full solution. Don’t worry if you cannot solve them – you will improve a lot just by trying.

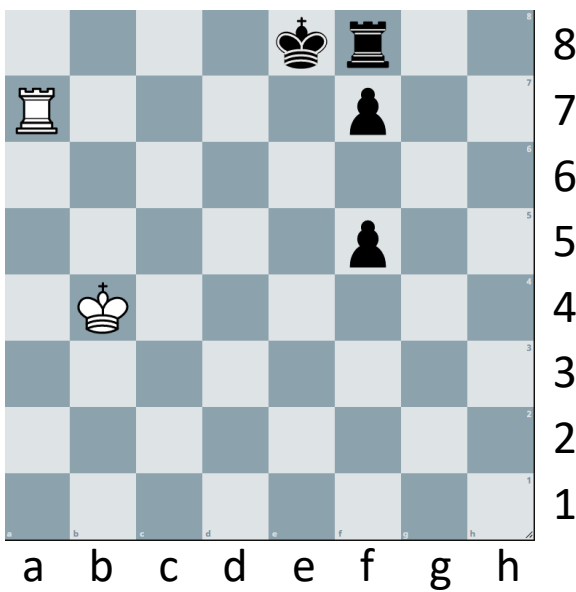
1



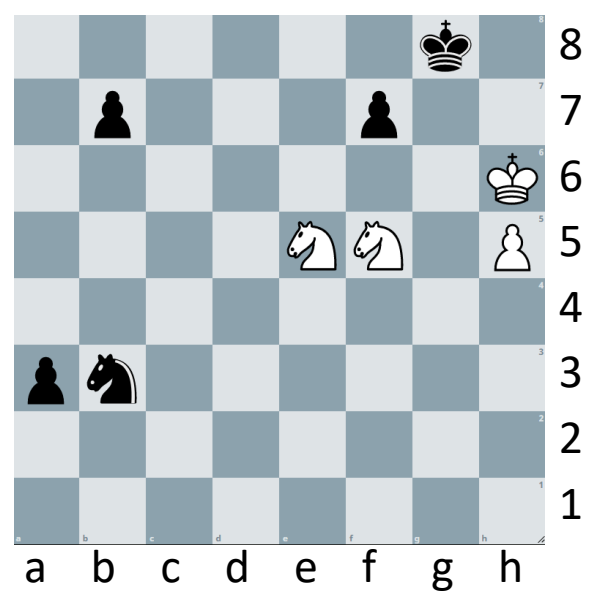
3



2



4

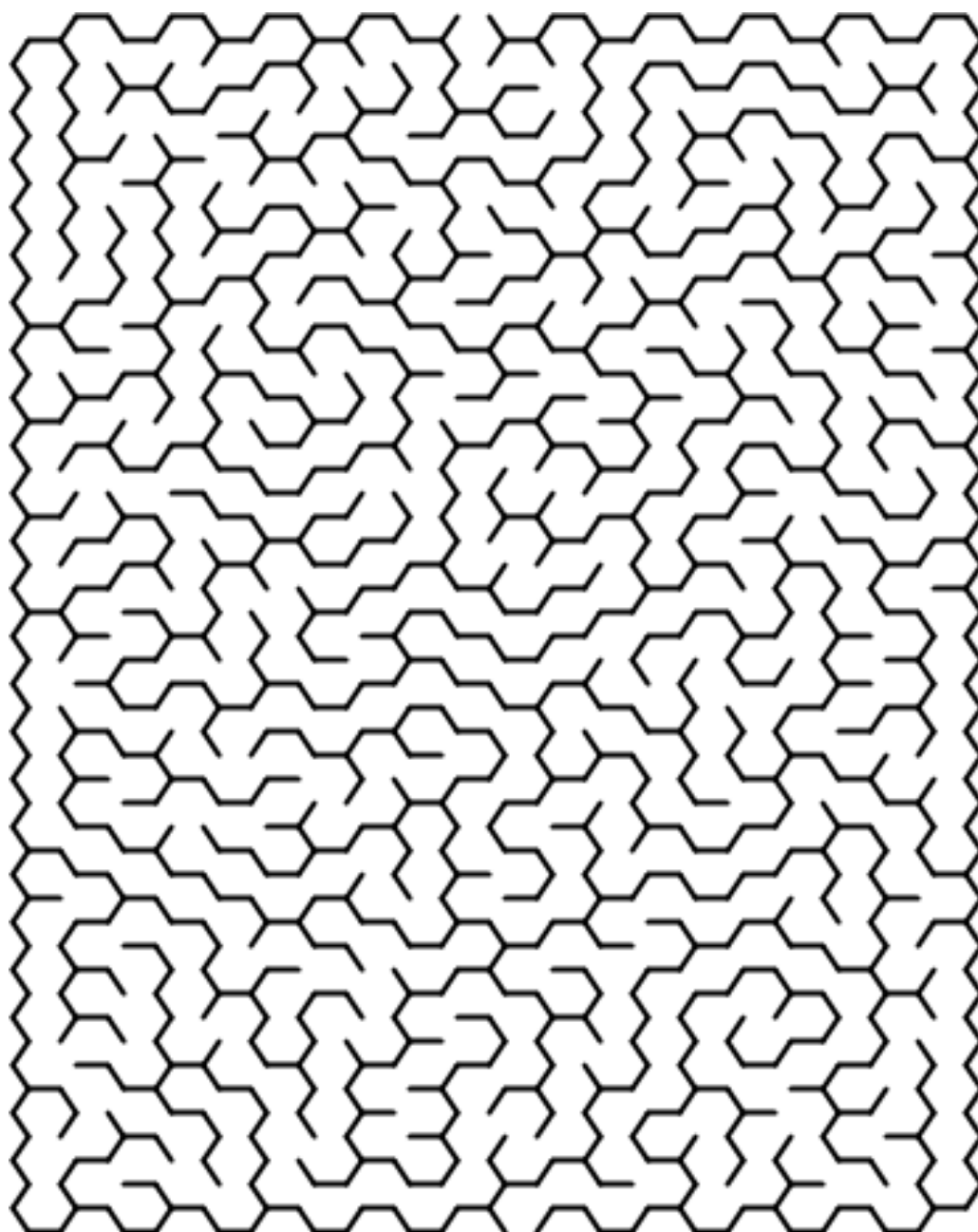


Fun Puzzles

Over the next couple of pages you will find some more casual puzzles starting out easy and getting much harder!



Maze - Easy



Fun Puzzles

Word search - Moderate

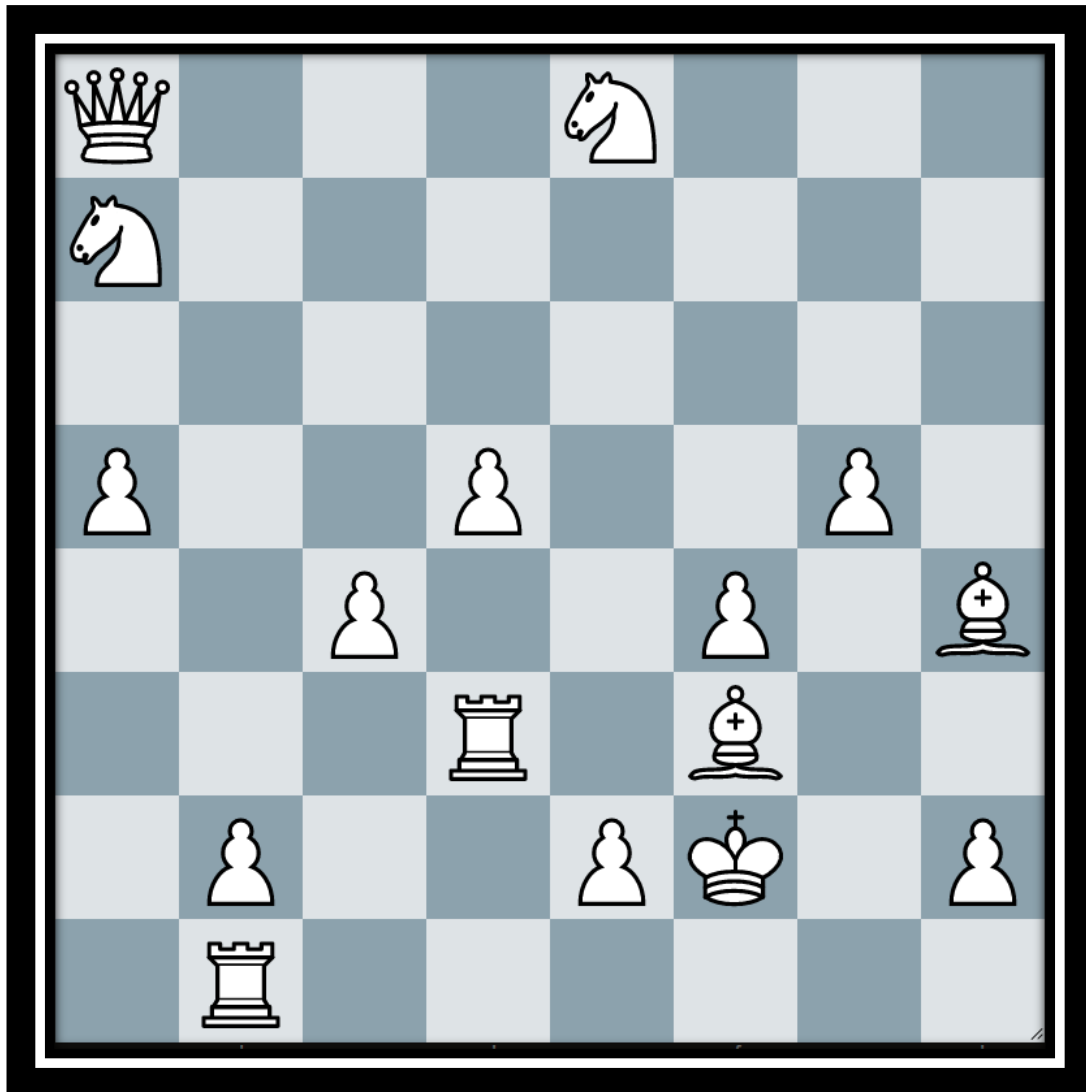
Find the World Champions!

P	I	T	W	S	O	C	I	I	C	S	B	F	L
T	Y	S	V	A	B	O	T	V	I	N	I	K	Z
L	A	S	A	P	E	T	R	O	S	I	A	N	K
F	U	L	N	S	T	E	I	N	I	T	Z	H	E
I	I	I	C	A	P	A	B	L	A	N	C	A	Y
S	V	S	K	S	A	A	S	I	E	Z	I	O	K
C	Y	R	E	K	S	A	L	Y	E	I	S	S	S
H	V	L	K	A	S	P	A	R	O	V	H	S	S
E	N	O	S	I	K	N	R	W	V	E	I	E	A
R	Z	C	L	S	O	E	A	T	S	R	K	C	P
T	S	E	U	S	A	L	E	K	H	I	N	E	S
I	A	A	I	L	Y	I	M	K	A	N	P	S	I
A	A	O	R	H	K	M	M	A	E	U	W	E	T
K	S	N	A	I	R	K	S	K	A	B	R	E	S

KASPAROV
SPASSKY
TAL
SMYSLOV
CAPABLANCA
ALEKHINE
PETROSIAN
FISCHER
EUWE
LASKER
STEINITZ
BOTVINIK

Fun Puzzles

No Threat Puzzle (Source: bridles.com) – Hard



Place the entire black army on the board in such a way that not a single piece on the board (either white or black) is under attack.

Seems impossible – yet strangely it isn't...

Take a look at...

If you enjoyed solving the checkmate and tactics puzzles today you might enjoy WFM Sarah, and GM Danny King's Chessable course on tactics!

In the course you can find lots of puzzles as well as engaging videos and most importantly leaderboards!

You can find out more online or using the link below.

<https://www.chessable.com/tournament-ready-tactics/course/33346/>



👍 Learn chess with Sarah and Danny!

So you want to have fun playing chess? But you also want to get good at chess? And you want to WIN at chess?

Join the **Delancey UK Chess Challenge**, "The World's Largest Chess Competition", and see if you can get yourself *Tournament Ready*.

Win badges, bonus points and complete the level!

Some of Britain's best players have played in the UKCC - such as the brilliant Grandmaster David Howell. Maybe one-day people will talk about you like that and YOU will have that title?

Contact Us

Any questions, comments or ideas about anything chess related we'd love to hear from you!

Email: admin@ukchess.co.uk

Phone: 0161 485 1729

Facebook: <https://www.facebook.com/DelanceyUKSchoolsChessChallenge/>