



DELANCEY UK SCHOOLS

CHESS CHALLENGE

Activity Booklet

Saturday 05/09/2020



Introduction

The UKCC weekly activity booklet will be sent out every Saturday morning and contains chess puzzles and activities for a range of ability levels.

Players are encouraged to at least try and complete the page most relevant to their ability level (see table below). However you are welcome to tackle the entire booklet! At the end of the booklet there are some more general puzzles / activities for everyone to enjoy

Solutions

Solutions will be posted alongside the following weeks activity booklet and there will also be a video solution guide.

Please email us any feedback or ideas for future puzzles!

Ability Levels

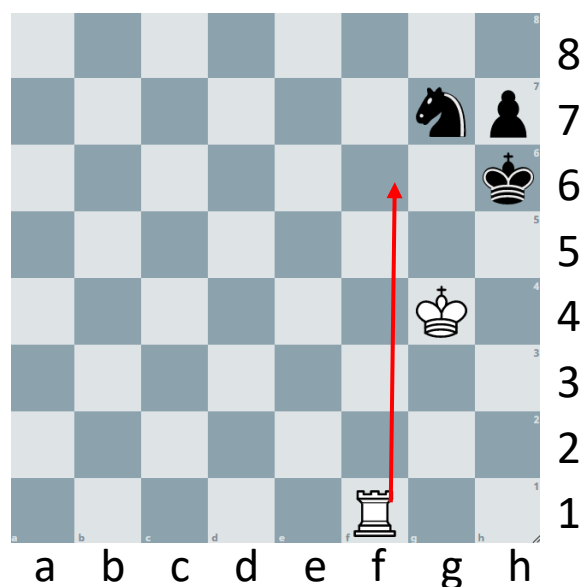
Club	Description	Approximate ECF Grade *
DECA – Club	Complete beginners and those with an incomplete grasp of the rules	Ungraded
MEGA – Club	Know the rules but little grasp of planning what to do beyond capturing and quick checkmates. Little to no tournament experience	0 – 59
GIGA – Club	Players with some tournament experience looking to “level up”	60 – 99
TERA – Club	More experienced players who have won or placed highly in local competitions	100 – 129
EXA - Club	Very experienced players with success at National Level events	130 – 159

Example

Below are examples of how you might write your solution to a puzzle presented in the booklet. Or you might prefer to just solve them in your head – completely up to you!

Q: Can you find checkmate in one for white?

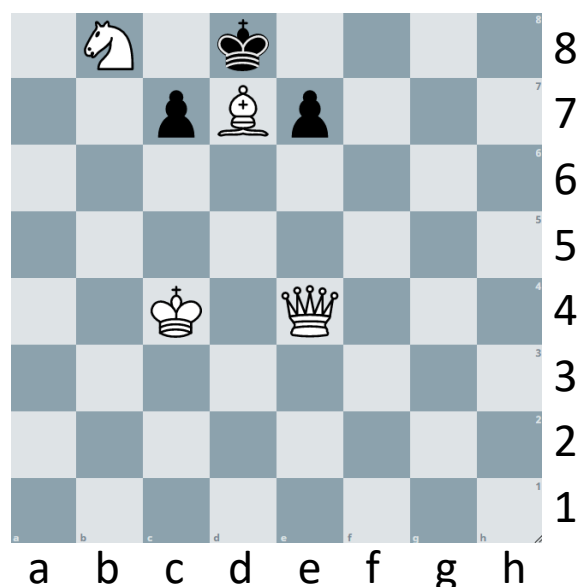
Here, because the solution is only one move, you might draw arrows on the board or you can use the lines below to answer – or both!



Rf6#
.....
.....

Q: Can you find checkmate in two for white?

Here, the solution is a bit (OK a lot!) trickier and requires consideration of multiple variations. If you are familiar with coordinates, it is probably best that you write your answer out as shown.

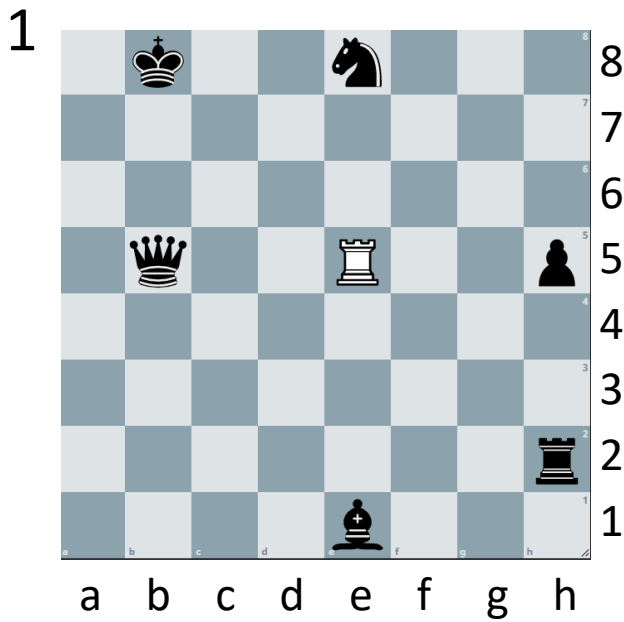
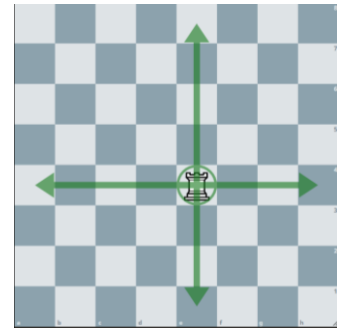


1.Qe1 e6 (1..c6 2.Qa5#) 2. Qh4#
.....
.....

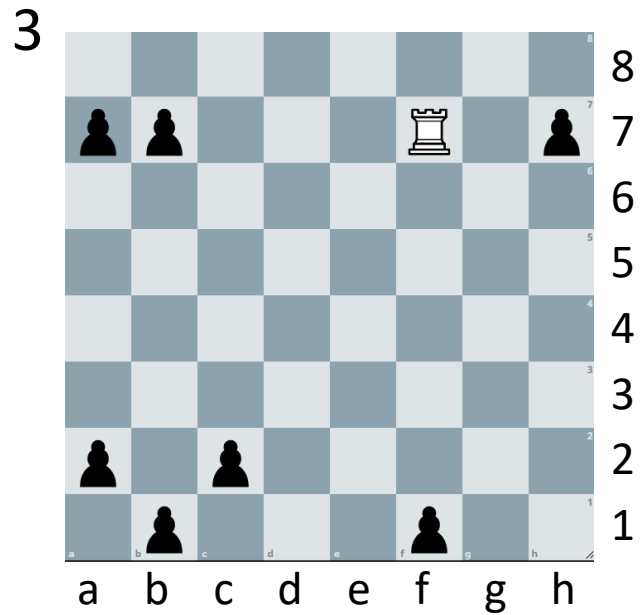
Deca

The rook can move in straight lines as many squares as it likes as shown on the right. A rook captures a piece by moving on top of it.

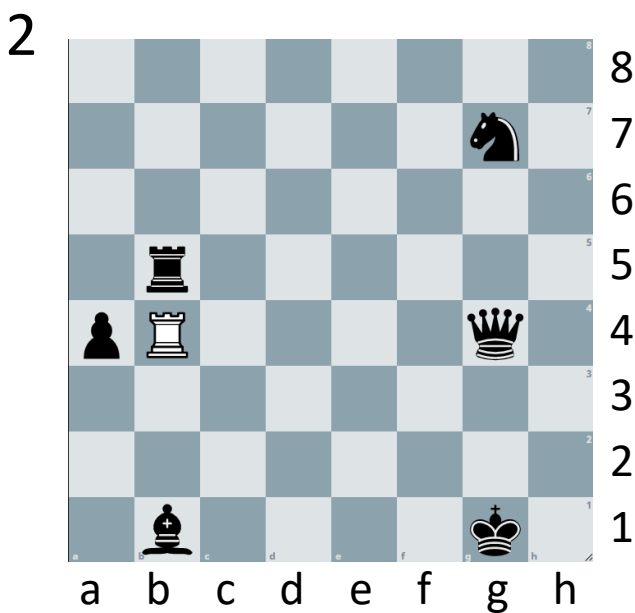
See if you can solve the ‘**hungry rook**’ puzzles below, try and capture all the pieces in as few moves as possible. Write down how many moves it takes you. Unlike in real chess black does not get to make a move!



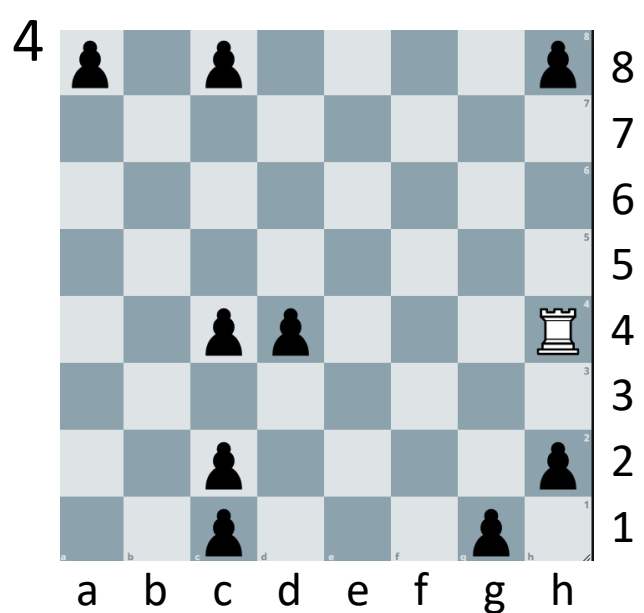
.....



.....



.....



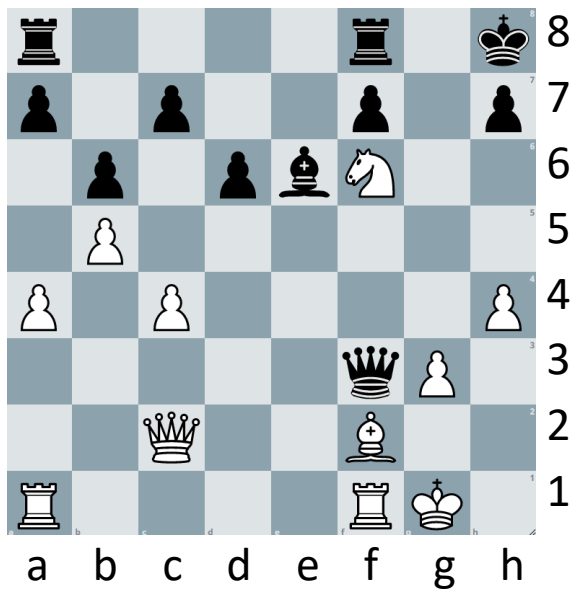
.....

Mega

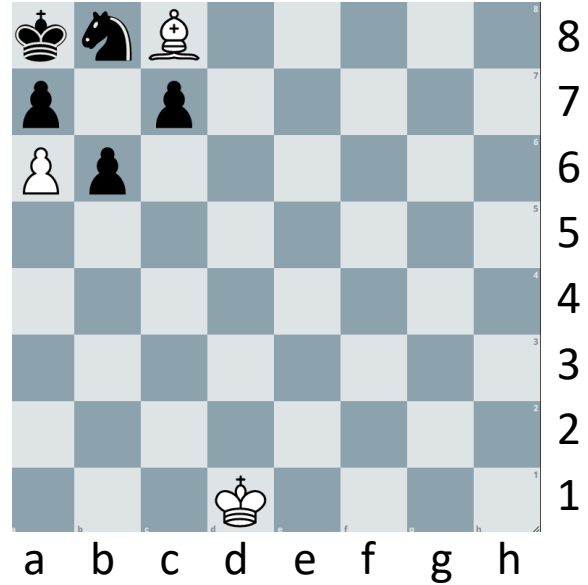
You'll be familiar with checkmate by now, one of the most important concepts in chess.

In the diagrams below it is white play. Can you find the checkmates in one move?

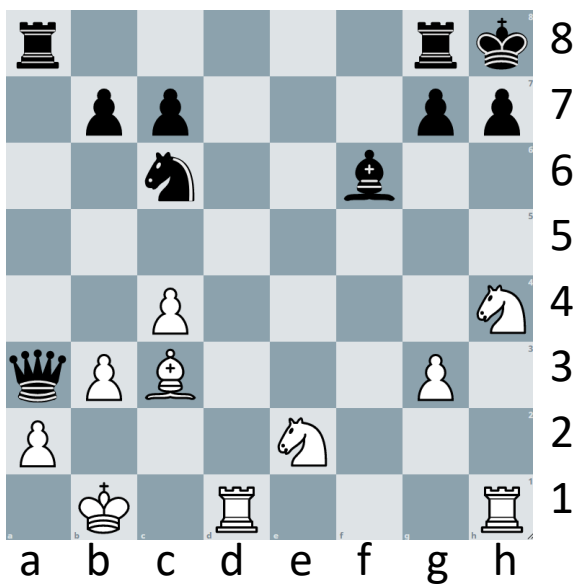
1



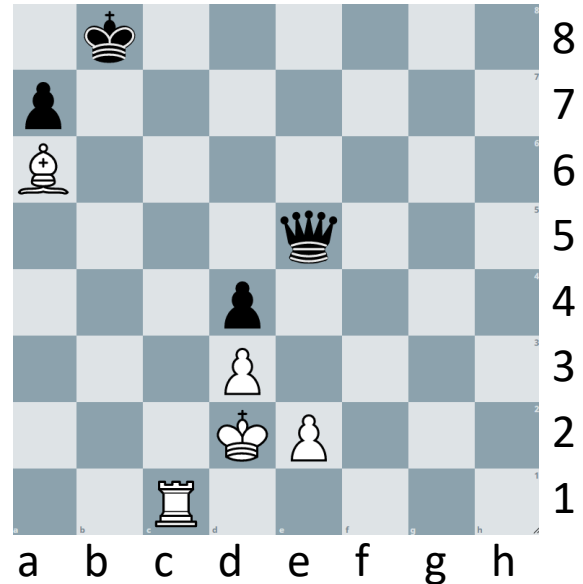
3



2



4

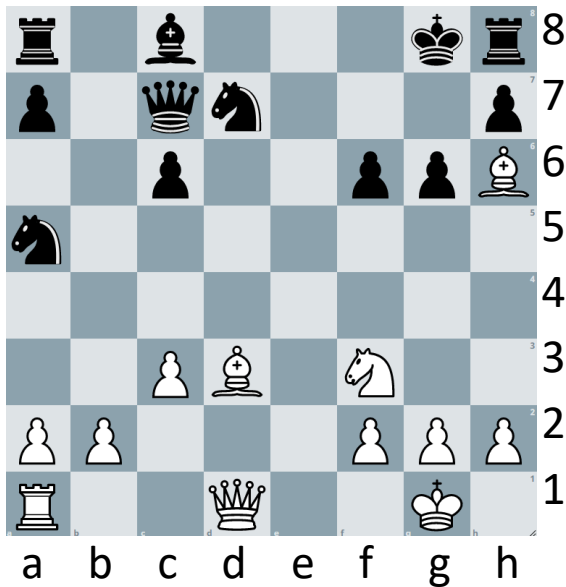


Giga

You'll be familiar with checkmates in one, but much harder are checkmates in two! There are many more ways to make two moves than to make one!

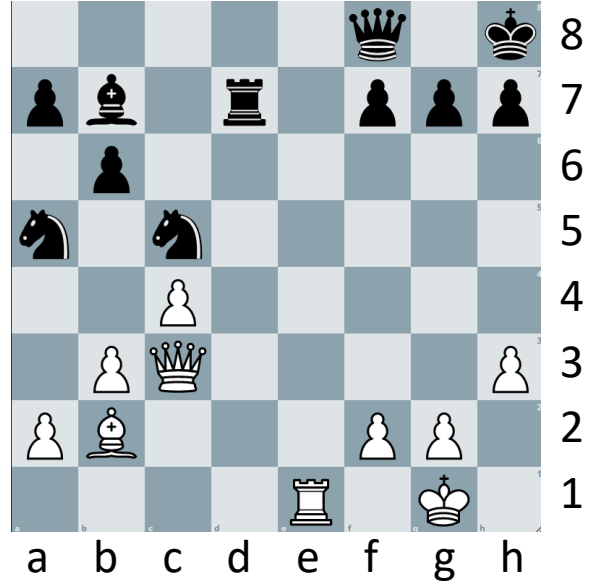
Write the solutions to these checkmates in two below. So you have to find white's first move, black's best defence and then white's winning move.

1



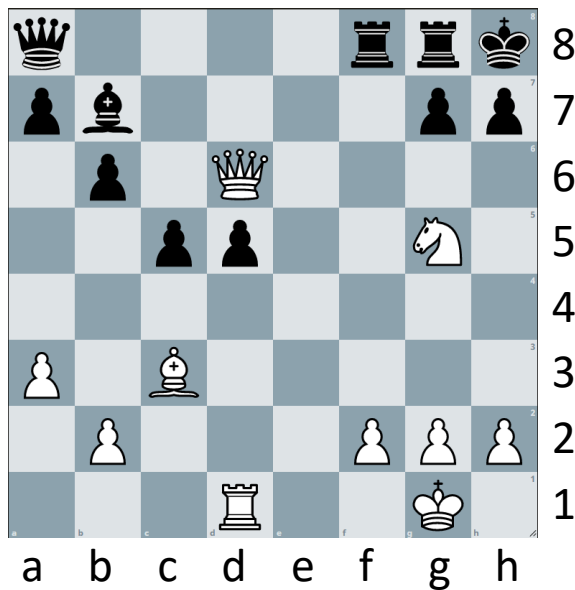
.....

3



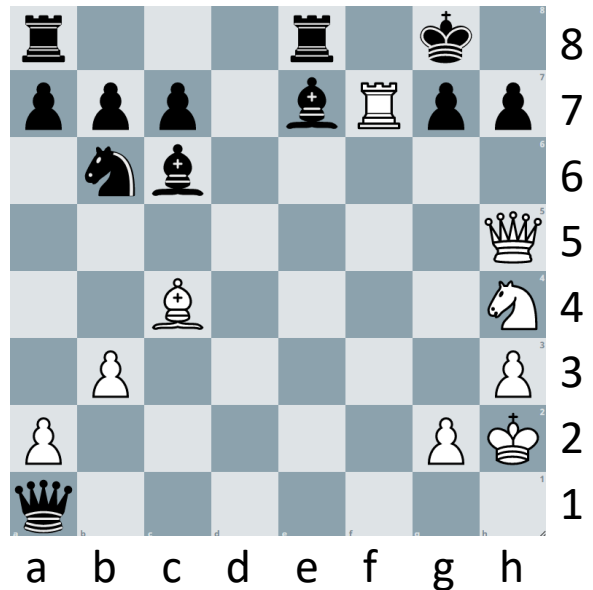
.....

2



.....

4

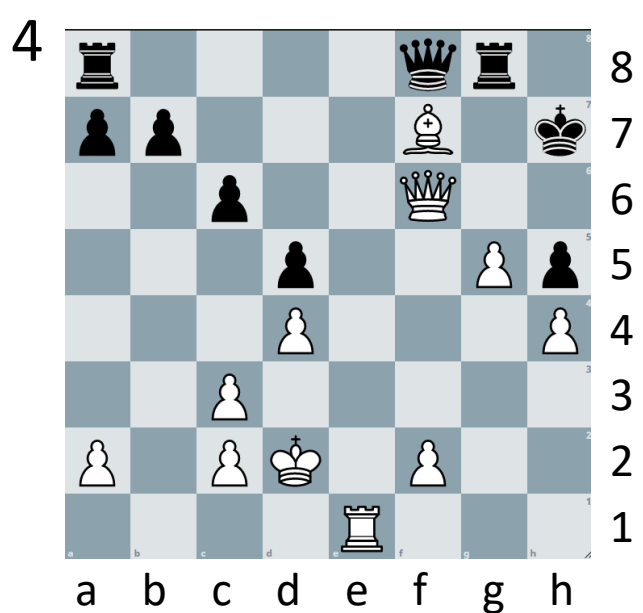
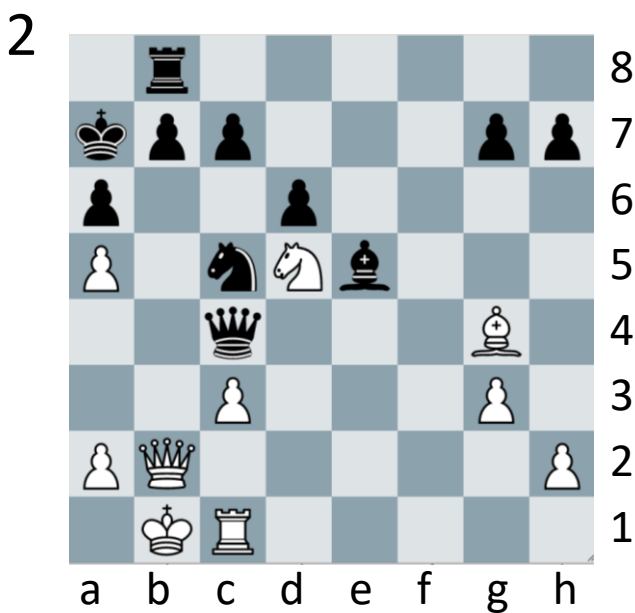
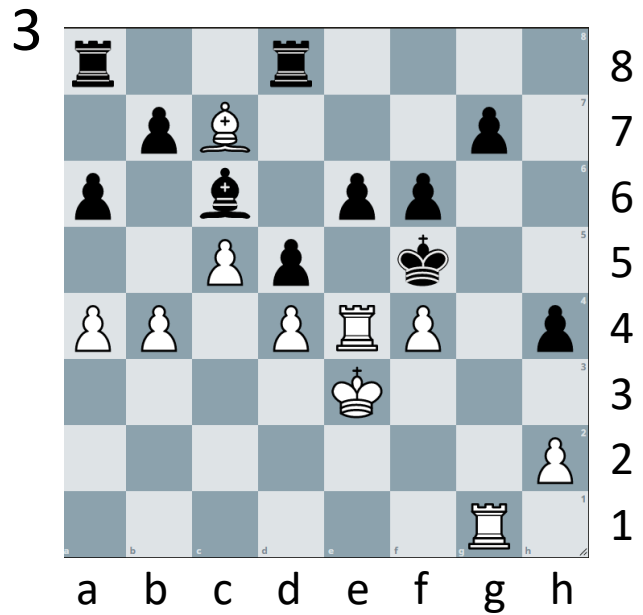
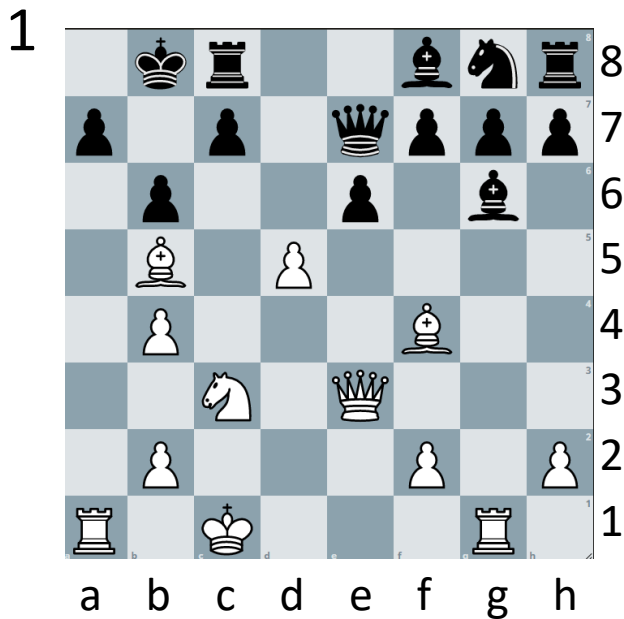


.....

Tera

The below positions are much more common than your typical checkmate in one or two positions. Forcing checkmates will often arise in games but having the skill to spot them is another matter!

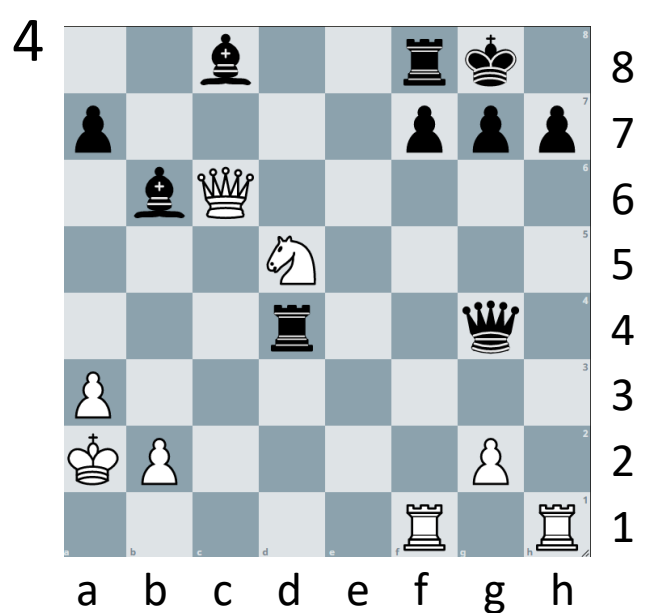
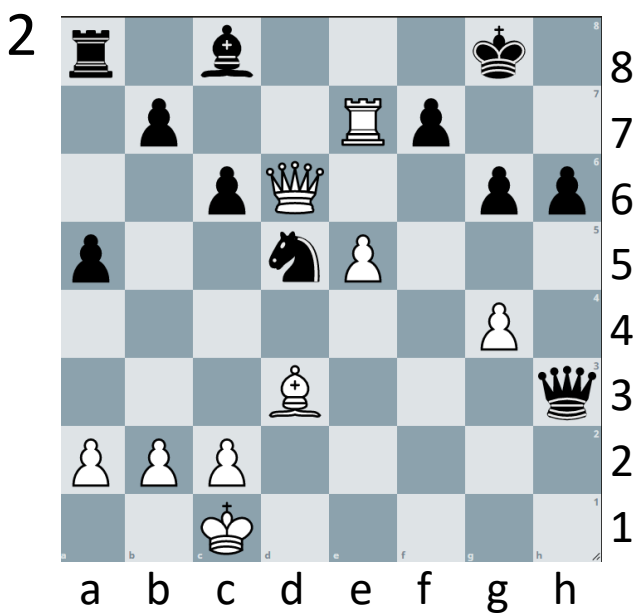
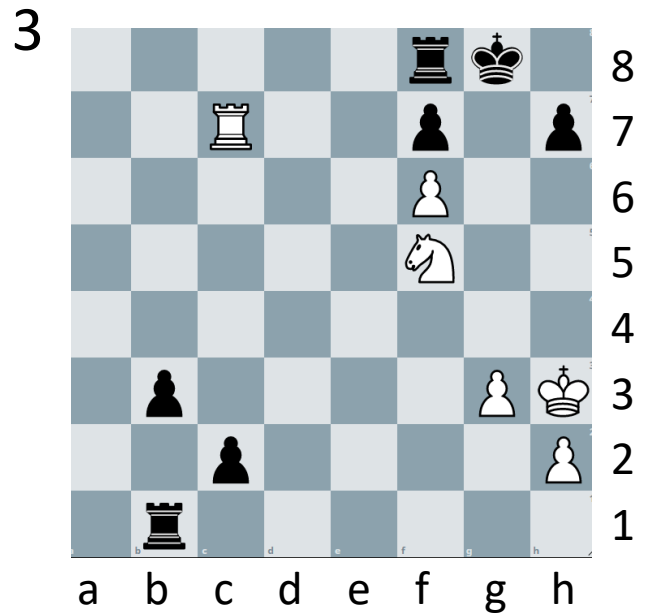
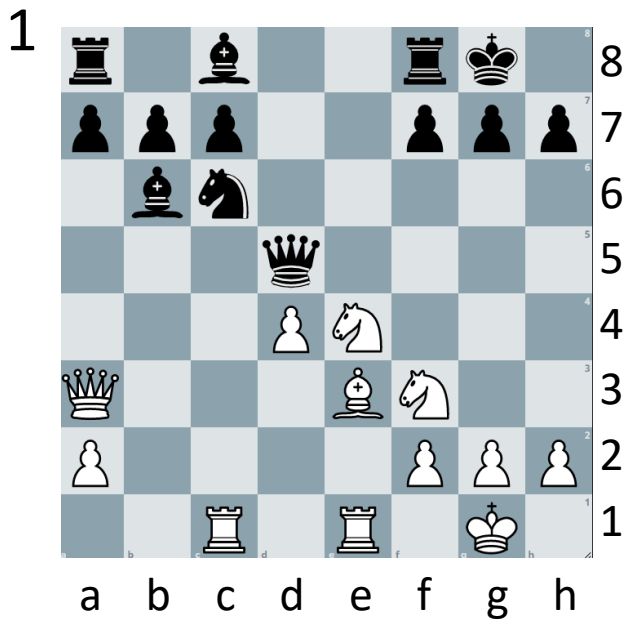
Can you spot the three move checkmates below? Again make sure you look for the best defence for black also.



Exa

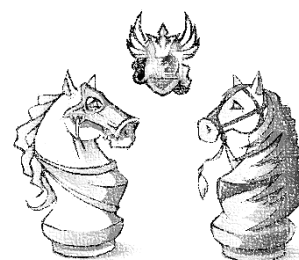
The below puzzles are a real challenge! These are lengthy mating attacks which will really test your chess skills (one is a forced mate in eight!)

Can you find all the solutions?

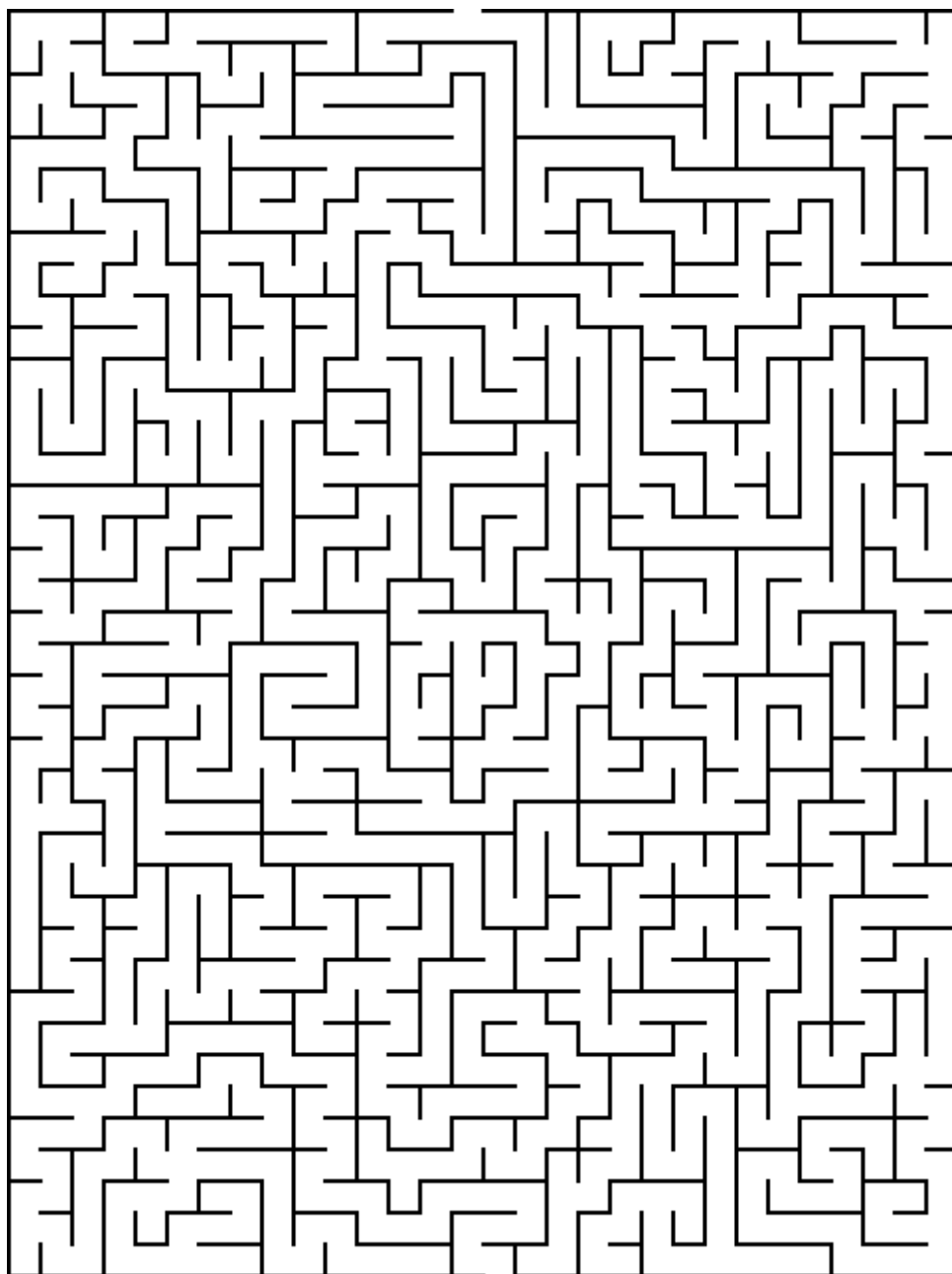


Fun Puzzles

Over the next couple of pages you will find some more casual puzzles starting out easy and getting much harder!



Maze - Easy



Fun Puzzles

Word search - Moderate

A	E	E	G	E	C	S	N	R	N	E	E	K	A
X	T	C	T	E	R	A	G	M	G	A	C	A	K
H	B	A	G	I	G	H	H	P	K	N	N	A	K
D	C	W	E	O	U	I	M	G	I	M	C	A	P
P	S	W	E	P	G	W	H	K	N	S	N	W	O
A	K	E	M	E	A	K	E	C	G	O	P	E	H
G	N	C	H	E	C	K	M	A	T	E	X	M	S
H	I	K	X	M	B	A	A	I	I	A	A	A	I
A	G	G	Q	C	G	I	D	C	M	T	G	T	B
C	H	P	S	O	I	H	I	A	E	N	G	M	E
A	T	I	K	E	E	I	T	A	G	D	K	G	G
H	E	T	M	P	A	W	N	G	A	O	I	I	N
I	E	O	Q	U	E	E	N	E	O	K	A	E	A
I	P	R	P	E	Q	K	N	R	K	G	K	A	G

PAWN
GIGA
MEGA
CHECKMATE
EXA
KNIGHT
ROOK
QUEEN
TERA
BISHOP
KING
DECA

Riddle (Source: Chessbase) – Hard



As you can see in the picture, there are five boxes standing in a row. You would love to play a game of chess in one of the *next six days*, but you know that all the required chess pieces are hidden in only one of the boxes.

You are only allowed to open *one* box and check if the pieces are inside. Once that is done, you have to wait till the next morning to open another one. In the worst case, you might find the correct box after five days in total, correct?

Unfortunately, the chess pieces awake at midnight, open their box and sneak into the *next adjacent box*, either to their left or right side. I hate it when that happens. How can you guarantee to find the chess pieces in the next six days!?

Take a look at...

If you enjoyed solving the checkmate puzzles today you might enjoy WFM Sarah, and GM Danny King's Chessable course on checkmates!

In the course you can find lots of puzzles as well as engaging videos and most importantly leaderboards!

You can find out more online or using the link below.

<https://www.chessable.com/tournament-ready-checkmates/course/33344/>



👍 Learn chess with Sarah and Danny!

So you want to have fun playing chess? But you also want get good at chess? And you want to WIN at chess?

Join the **Delancey UK Chess Challenge**, "The World's Largest Chess Competition", and see if you can get yourself *Tournament Ready*.

Win badges, bonus points and complete the level!

Some of Britain's best players have played in the UKCC - such as the brilliant Grandmaster David Howell. Maybe one-day people will talk about you like that and YOU will have that title?

Contact Us

Any questions, comments or ideas about anything chess related we'd love to hear from you!

Email: admin@ukchess.co.uk

Phone: 0161 485 1729

Facebook: <https://www.facebook.com/DelanceyUKSchoolsChessChallenge/>